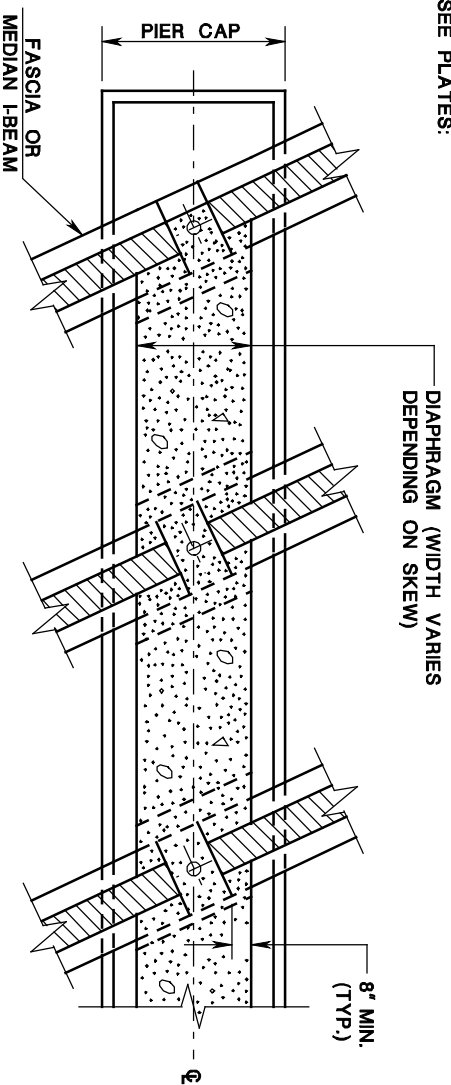


CONTINUITY DESIGN FOR LIVE LOAD, PC I-BEAM DIAPHRAGMS

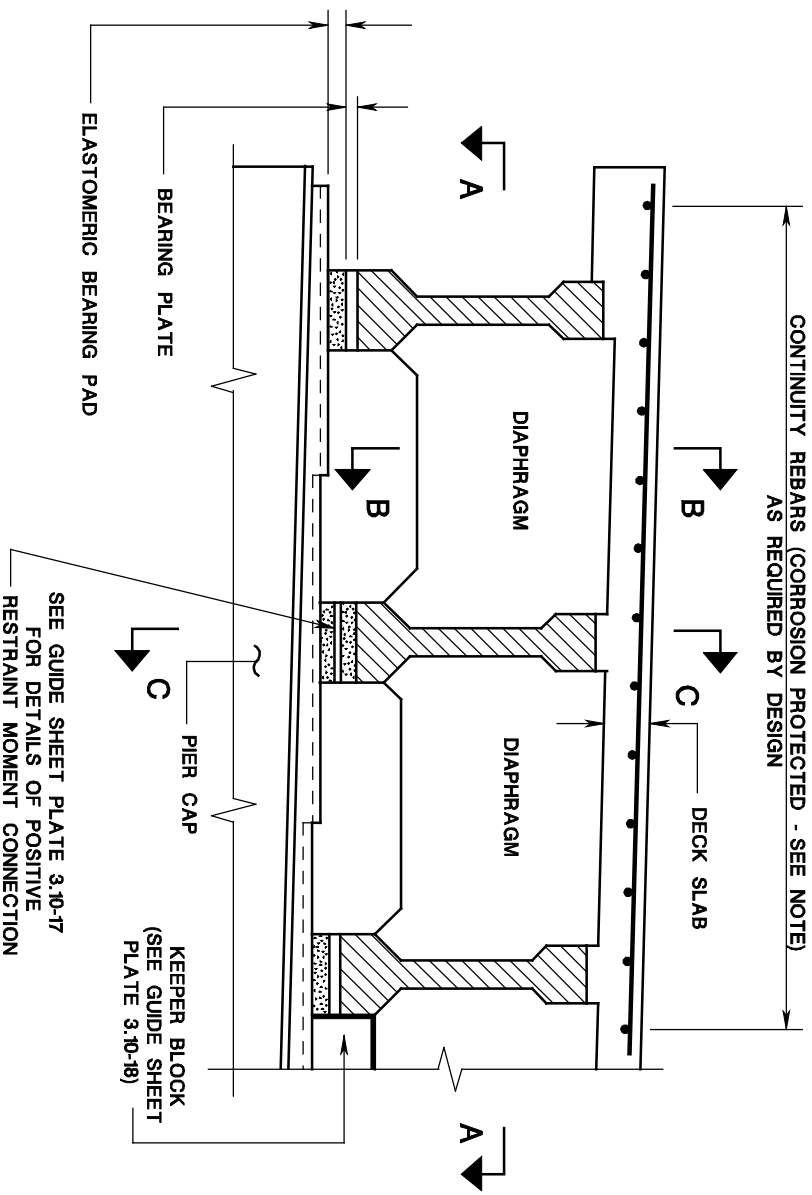
ISSUED: 2009

PLATE
3.10-15

ALSO SEE PLATES:
3.10-16
3.10-17
3.10-18



CONTINUITY REBARS (CORROSION PROTECTED - SEE NOTE)
AS REQUIRED BY DESIGN



FOR SECTIONS B-B AND C-C, SEE GUIDE SHEET PLATE 3.10-16.